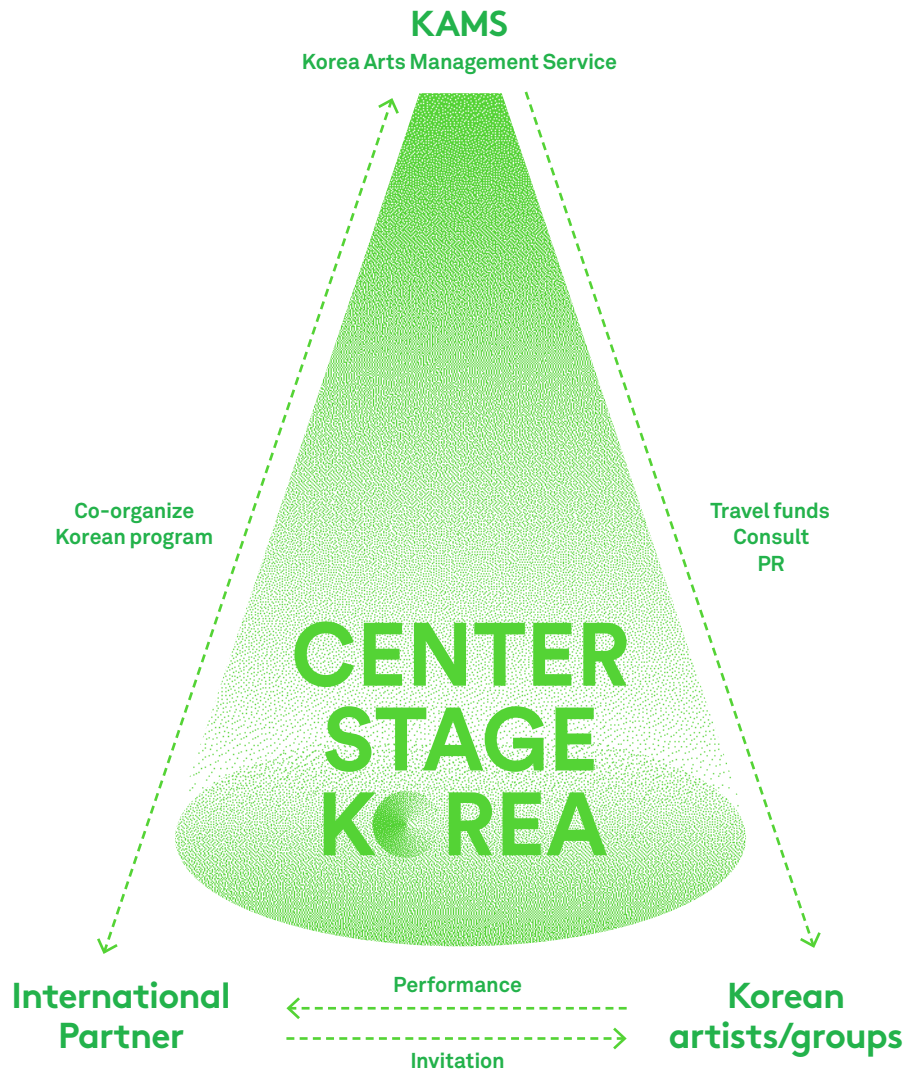


CENTER STAGE KOREA

Support Program for
Korean Performance Presentation

For presenters hoping to stage Korean performances,
Center Stage Korea is open for you!



Center Stage Korea(CSK)

established by Korea Arts Management Service,
is a program to support international presenters
in introducing Korean performances on the stage.

Every year **CSK** calls on internationally
selected partners to introduce Korean arts
in cooperation with **CSK**.

CSK provides selected partners with
the travel costs of the invited Korean artist or group,
and co-organizes special programs focusing on
Korean performing arts.

CSK is waiting for partners, who will enrich
the cultural lives of audiences all over the world
by introducing the beauty and diversity of
Korean performing arts!

CONTACT

Korea Arts Management Service
Market Development Team

e csk@gokams.or.kr

w <http://eng.gokams.or.kr>

How to apply

CSK calls on internationally selected partners to promote and develop Korean performing arts in cooperation with CSK.

Who can apply?

International performing arts organization(festival, venue, and network)

Eligible Projects

Type of Projects

- 1 A single festival or venue presenting a [Korea Focus program](#)
 - A program featuring multiple Korean performing artists and groups
 - A program featuring Korean performing group(s) in an opening or closing performance, etc

※ It is highly recommended that the Korea focus program includes an additional program, such as workshop, forum, press meeting, or reception to focus on Korean performing arts.
- 2 A tour featuring one or more Korean performing artists/groups with partner organizations in several venues
- 3 A tour featuring one or more Korean performing artists/groups by members of a partnered cooperative network (EFWMF, La Red)

Necessary Conditions of the Project

- 1 The project must invite Korean artists/groups with appropriate conditions (performance fee, accommodation, per-diem, etc.)
- 2 The project must take place and finish between March and January of the following year

Center Stage Korea's Partner Network

- 1 EFWMF (European Forum of Worldwide Music Festivals)
- 2 La RED (La Red de Promotores Culturales de América Latina y El Caribe)

KAMS hopes to collaborate with more possible network partners who are planning to present tours of Korean performing arts on international stage.

Grant Supports

International airfare, freight costs(partly)

※ The grant will be directly allocated to invited artists/companies of selected proposals

Submission Period

Sep. 1 - Nov. 30

Submission Documents

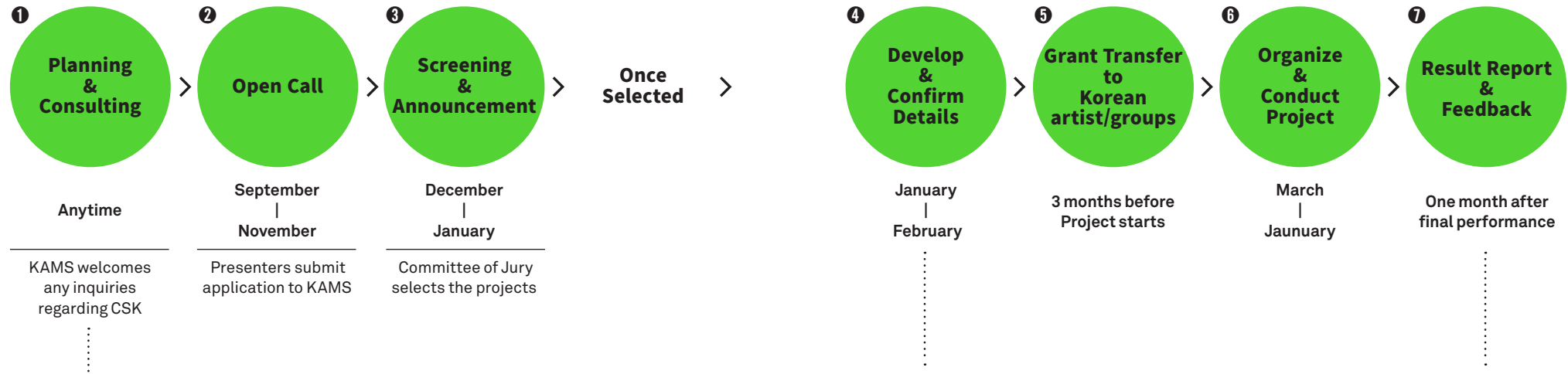
- 1 KAMS proposal application
<http://eng.gokams.or.kr>
- 2 Documents demonstrating previous projects

How to Submit

By email : csk@gokams.or.kr

Contact

Market Development Team
t. +82-2-708-2278/2287
e. csk@gokams.or.kr



KAMS welcomes any inquiries regarding CSK

Presenters submit application to KAMS

Committee of Jury selects the projects

PRESENTERS & KAMS
Develop project, conclude MOU
 Selected partners can co-organize with KAMS additional programs (the forum, reception, etc).

PRESENTERS & ARTISTS/GROUPS
CONTRACT
 After concluding the contract, presenters should submit the contract to KAMS.

PRESENTERS
 Submit feedback report to KAMS

ARTISTS/GROUPS
 Submit report of projects' results and accounting records to KAMS

KAMS'S SUPPORT FOR PLANNING KOREA FOCUS

For international presenters who hope to hold a Korea focus program featuring multiple Korean performing artists/groups, KAMS can assist in connecting you directly with Korean performing artists and companies! After reviewing the international presenter's capacity to hold a Korea Focus, KAMS can give the following types of support below.

1 Special Open Call

It's a support to provide a presenter with a list of Korean artists and groups. Korean artists and groups who hope to appear on the presenter's stage should apply for the special open call. Presenters can select artists and groups among the applied list to perform on their Korea Focus program.

2 Curatorial Trip in Korea

The program of the curatorial trip will consist of PAMS Choice (a selection of performing arts of PAMS), an official program of Korean performing arts festivals, and other performances, rehearsals, and meetings with artists, depending on presenters' needs.

Many internationally diverse partners have been presenting the sheer variety of Korean performing arts with CSK!

42nd 香港藝術節
Hong Kong Arts Festival
18.2-22.3.2014



Jeong Ga Ak Hoe



SUEM



Ye Hyoseung

+ Dance-Music Workshop



Jeong Geumhyung

FESTIVAL

SKRZYŻOWANIE
CROSS KULTUR
CULTURE



11. MUZYCZNE ŚWIĄTYNIE
BOYCJA - TEATR WARSZAWA 2014

+ Music workshop 'Direction of Korea'

TANZ IM AUGUST

27. Internationales Festival
12.8.-6.9.2015 | Berlin



+ Meet the Artists



Geomungofactor



Baraji



Norummachi



Company SIGA

FESTIVAL D'AUTOMNE A PARIS
44^e édition



Kim Kwilyun

PER LE ARTI CONTEMPORANEE
FONDAZIONE
FABBRICAEUROPA



Lee Hee-soon Company

CORÉE
Rituel chamanique
25 septembre 2015
Panson
31 septembre 2015
Théâtre de la Ville
Théâtre des Bouffes du Nord
Le Fresnoy - Studio national de danse contemporaine



Ahn Sooksun



Company SILEO



Son Hvaejaong

+ Press meeting
Dance workshop

 Teater CENTRUM

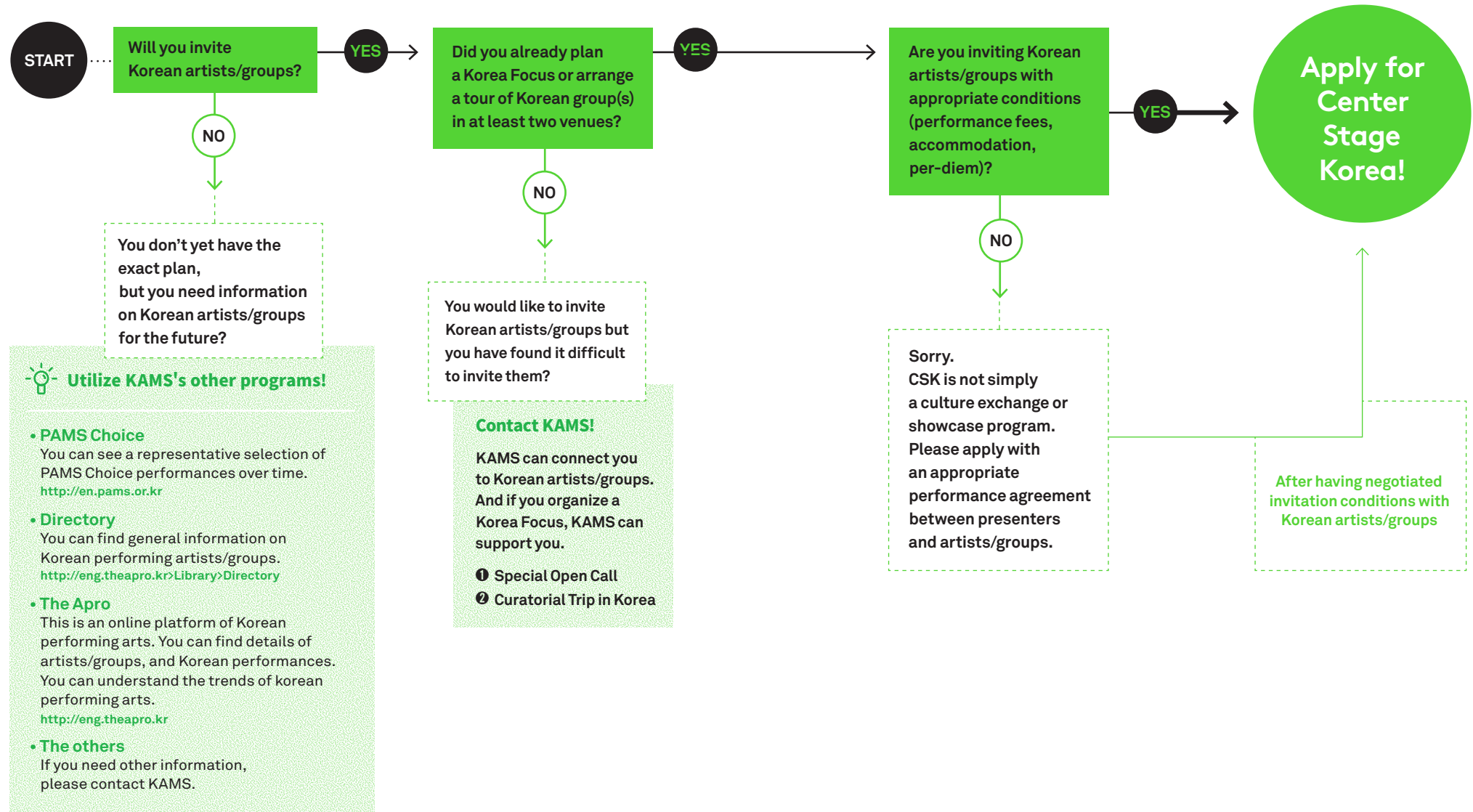


Art Stage SAN



Theatre Group Jayu

Check for Applying



Reviews of Partners



"The Korean performances organized by our festival would never have been possible without the strong support of Center Stage Korea. It has been an extraordinary experience for all people involved: artists, crew, festival managers, the audience, and the media. The Korea Focus has raised a strong interest in Korean artists and the lesser known sides of Korean culture. Many people told us that they had made an extraordinary discovery."

— Carole Fierz, Artistic Director, Paris quartier d'été, 2013



"Korean performing arts have proven themselves to be world class. The challenge for Korean artists now is to present themselves before a broader international audience. In theatre, in music, in virtually all aspects of the arts, Korean performing and visual artists are producing some of the most interesting and innovative work in the world."

— Jonathan Mills, Artistic Director, Edinburgh International Festival 2011, 2013



"We were impressed by the elevated artistic level of all the proposals, particularly the virtuosity of the performers and the creative variety. We found very interesting those creations that blend Eastern and Western points of view. Notably that creators and companies have ways to achieve very singular productions that also express the artists and directors' perspective of the world."

— Adela Donadio, Fundacion Teatro Nacional 2010

Partners around the world

DENMARK

Teater Centrum 2015

FRANCE

Festival d'Automne à Paris 2015

Paris quartier d'été 2013

GEORGIA

Tbilisi International Festival of Theatre 2009

GERMANY

Tanz im August 2015

HUNGARY

Shakespeare Festival Gyula 2012

ITALY

Festival Fabbrica Europa 2015

NETHERLANDS

Free Note foundation 2014

POLAND

Cross Culture Festival 2015

Silesian Dance Theatre 2011

ROMANIA

Sibiu International Theatre Festival 2012, 2013

SPAIN

Trayectos Dance Festival 2011

U.K.

Edinburgh International Festival 2011, 2013

Dance Initiative Greater Manchester 2012



- Eun-Me Ahn Company
- Be-Being
- Noreummachi

CHINA

Hong Kong Arts Festival 2015

SINGAPORE

Arts Festival Limited 2014

TAIWAN

National Performing Arts Center 2014



AUSTRALIA

Darwin Festival 2010

OzAsia Festival 2010

Arts Centre Melbourne 2010

Kenneth Myer Asian Theatre Series 2010



U.S.A.

Legion Arts 2012

Lincoln Center for the Performing Arts
2009, 2012

Museum of Contemporary Art 2012

National Performance Network 2012

Under the Radar Festival 2009

GlobalFest 2008

MEXICO

UNAM:Universidad

Nacional Autonoma de Mexico 2011



Lincoln Center

Legion Arts

Museum of Contemporary Art Chicago

ARGENTINA

Complejo Teatral de Buenos Aires 2014

BRAZIL

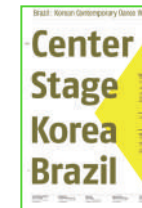
International Theater Festival of
Belo Horizonte 2010

Prefeitura da Cidade de São Paulo 2009

Cena Contemporânea 2013

Festival de Teatro de Curitiba 2013

SESC/São Paulo 2013



- LEE Tae-sang D.T.1
- Sungsoo Ahn Pick-up Group
- Blue Elephant Company
- Park Na hoon
- Ahn Aesoon Dance Company

COLOMBIA

Ibero-American Theater

Festival of Bogotá 2014

Festival de Teatro de Manizales 2011

Teatro Los Fundadores 2011

Teatro Pablo Tobón Uribe 2011

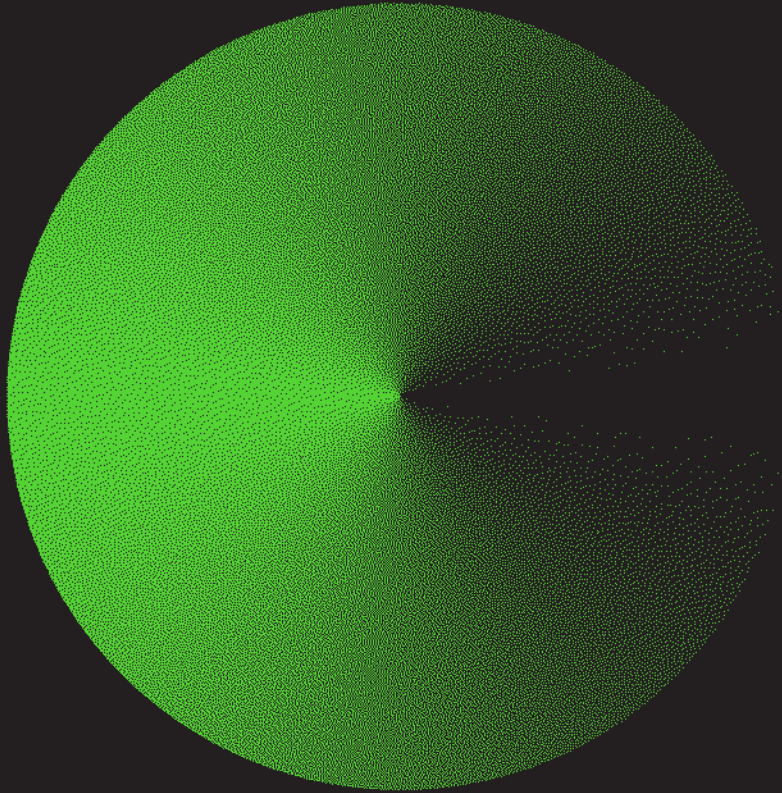
Fundacion Teatro Nacional 2010



- Sadari Movement Lab
- Now Dance Company
- Eun-Me Ahn Company

CHILE

Festival Internacional Santiago a Mil 2008



Korea Arts Management Service

**Korea Arts Management Service (KAMS),
affiliated with the Ministry of Culture, Sports and Tourism(MCST),
works to strengthen the viability of Korean arts
and to promote them worldwide.**